



FOURTH EDITION

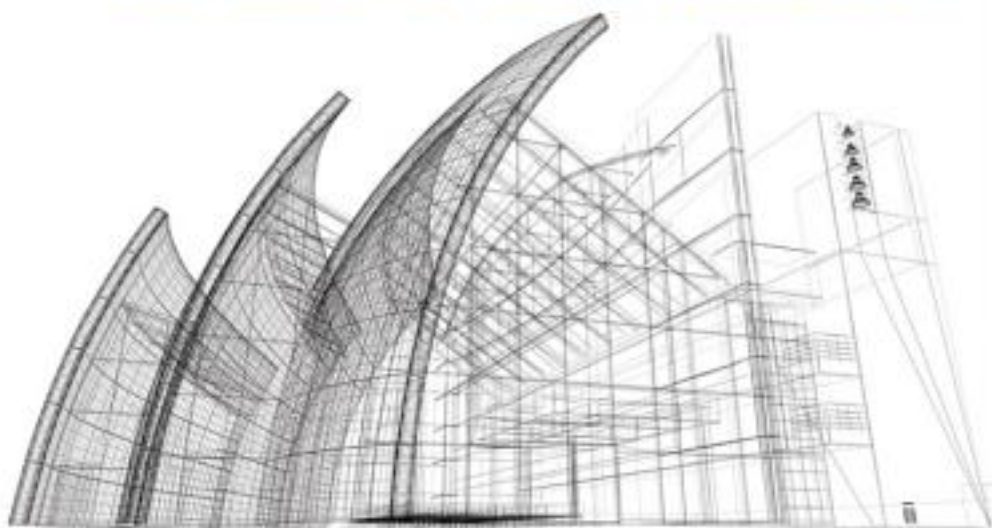


INCLUDES CD

HOW TO ESTIMATE

with **RSMeans Data**

BASIC SKILLS FOR BUILDING CONSTRUCTION



RSMeans

RSMeans and Saleh A. Mubarak, Ph.D.

How to Estimate with RSMeans Data: Basic Skills for Building Construction, Saleh A. Mubarak, R. S. Means, John Wiley & Sons, 2012, 1118183398, 9781118183397, 286 pages. Using North America's most recognized construction cost data from RSMeans, this step-by-step guide develops problem-solving skills through over 300 sample problems and exercises. All of the major construction items, including site work, concrete and masonry, wood and metal framing, doors and windows, and more are covered. Access to a password-protected web site is included, which contains the instruction version of RSMeans Cos/Works, the electronic version of RS Means Building Construction Cost Data, and sample building plans and spreadsheets, enabling you to practice creating a complete construction estimate..

Guide to Good Practice in the Management of Time in Complex Projects , CIOB (Chartered Institute of Building), Nov 9, 2010, Technology & Engineering, 240 pages. Delayed completion affects IT, process plant, oil and gas, civil engineering, shipbuilding and marine work contracts. In fact it affects all industries in all countries and the

RSMeans Concrete & Masonry Cost Data Means Concrete & Masonry Cost Data, Rsmmeans Engineering Department, Dec 12, 2012, Technology & Engineering, 611 pages. 2013 RSMeans Concrete & Masonry Cost Data. Provides you with cost facts for virtually all concrete/masonry estimating needs, from complicated formwork to various sizes and

Manual of Construction Project Management For Owners and Clients, JĐ“Ñri Sutt, May 9, 2011, Technology & Engineering, 168 pages. This construction client's manual is written in the form of a list of activities. It supports owners in the role of client by helping them make choices during the project

RS Means Heavy Construction Cost Data, Volume 22 , Eugene R. Spencer, Christopher Babbitt, Ted Baker, 2008, , 629 pages. .

Project Scheduling and Management for Construction , David R. Pierce, Jr., Sep 12, 2013, Technology & Engineering, 272 pages. First published in 1988 by RS Means, the new edition of Project Scheduling and Management for Construction has been substantially revised for students enrolled in construction

Commercial Management Theory and Practice, David Lowe, May 31, 2013, Technology & Engineering, 528 pages. Commercial Management: theory and practice defines the role of commercial management within project-oriented organisations, providing a framework for and helping to develop a

Means unit price estimating a comprehensive guide, William D. Mahoney, R.S. Means Company, Apr 1, 1986, Technology & Engineering, 356 pages. .

2012 Concrete/Masonry Cost Data , Stephen C. Plotner, Dec 31, 2011, , 595 pages. Contains latest unit price data, with illustrated concrete and masonry assemblies cost tables, helpful reference data and estimating aids. Use this for fast, accurate concrete

Construction Supply Chain Management , Stephen Pryke, Sep 15, 2009, Technology & Engineering, 248 pages. This book provides a unique appraisal of supply chain management (SCM) concepts alongside lessons from industry, observation and analysis gathered during the first decade of

Technical Drawing , David L. Goetsch, William Chalk, John A. Nelson, 2000, Technology & Engineering, 1054 pages. The best-selling Technical Drawing is now updated and better than ever, providing you with complete coverage of the drawing skills and information you need for a successful

Estimating in Building Construction , Frank R. Dagostino, Leslie Feigenbaum, 1999, Technology & Engineering, 377 pages. This book takes a careful, step-by-step approach to construction estimating

that documents each value. KEY TOPICS: The book provides practical coverage of both commercial and

Heavy Construction Cost Data , R S Means Company, Dec 1, 2002, , 470 pages. .

Using North America's most recognized construction cost data from RSMeans, this step-by-step guide develops problem-solving skills through over 300 sample problems and exercises. All of the major construction items, including site work, concrete and masonry, wood and metal framing, doors and windows, and more are covered. Access to a password-protected web site is included, which contains the instruction version of RSMeans Cos/Works, the electronic version of RS Means Building Construction Cost Data, and sample building plans and spreadsheets, enabling you to practice creating a complete construction estimate.

This step-by-step guide takes you through all the major construction items with extensive coverage of site work, concrete and masonry, wood and metal framing, doors and windows, and other divisions. An important new chapter, Introduction to Cost Estimating, covers many aspects and definitions of cost estimating specific to project management in the construction industry. The only construction cost estimating handbook that uses the most popular source of construction data, RSMeans, this indispensable guide features access to the instructional version of CostWorks in electronic form, enabling you to practice techniques to solve real-world estimating problems.

Dr. Saleh Mubarak, PE, holds a Ph.D. in civil engineering, with specialization in construction management. He has over twenty-two years of diversified experience as a civil engineer, cost estimator, scheduler, project controls manager, and professor. He has taught professional seminars all over the world. Dr. Mubarak is currently the head of the Department of Civil and Architectural Engineering at Qatar University. He is a leading authority in construction planning, scheduling, and project control, and the author of Construction Project Scheduling and Control.

All DepartmentsAmazon Instant VideoAppliancesApps for AndroidArts, Crafts & SewingAutomotiveBabyBeautyBooksCell Phones & AccessoriesClothing & AccessoriesCollectibles & Fine ArtComputersCredit CardsElectronicsGift Cards StoreGrocery & Gourmet FoodHealth & Personal CareHome & KitchenIndustrial & ScientificJewelryKindle StoreMagazine SubscriptionsMovies & TVMP3 MusicMusical InstrumentsOffice ProductsPatio, Lawn & GardenPet SuppliesShoesSoftwareSports & OutdoorsTools & Home ImprovementToys & GamesVideo GamesWatchesWine

literalContent: "Customers may shop for Kindle eBooks on Amazon.com.The following information applies:\n Your \"Manage Your Kindle\" will be on Amazon.com \n Only Visa and MasterCard holders will be able to purchase Kindle eBooks in Rupees \n Credit cards doesn't require any bank approval but debit cards need customer approval through their bank "

Get to Know UsCareersInvestor RelationsPress ReleasesAmazon and Our PlanetAmazon in the CommunityMake Money with UsSell on AmazonBecome an AffiliateAdvertise Your ProductsIndependently Publish with Us›See allAmazon Payment ProductsAmazon.com Rewards Visa CardAmazon.com Store CardShop with PointsCredit Card MarketplaceAmazon Currency ConverterLet Us Help YouYour AccountShipping Rates & PoliciesAmazon PrimeReturns & ReplacementsManage Your KindleHelp

adjustment Assemblies Assume average BCCD bricks builder's risk insurance Building Construction Cost Chapter column compensation insurance concrete Construction Cost Data contract contractor cost and cost cost estimating cost including O&P cost including overhead cost per hour CostList crew depreciation detailed Division duration engineering equipment cost Equipment operator Estimate the cost Estimate the total Example excavation Exercisesâ€”Set expenses feet formwork haul HVAC inches job in Exercise joists labor add-ons labor cost labor hours line item location factors markups masonry MasterFormat method needed oil change overhead and profit overtime owner percent percentage performance bond productivity providing and installing rates rebar Redo

Exercise Reference Number reinforcement rent rental Repeat Exercise roof RSMeans CostWorks
Estimator sales tax salvage value schedule Solution spreadsheet square foot structural steel
subcontractor total bare cost total cost including trucks unit cost unit price usually weight workers

<http://eduln.org/737.pdf>

<http://eduln.org/8452.pdf>

<http://eduln.org/7803.pdf>

<http://eduln.org/11577.pdf>

<http://eduln.org/7291.pdf>

<http://eduln.org/11624.pdf>

<http://eduln.org/15250.pdf>

<http://eduln.org/18419.pdf>

<http://eduln.org/15429.pdf>

<http://eduln.org/5116.pdf>

<http://eduln.org/10735.pdf>

<http://eduln.org/8177.pdf>

<http://eduln.org/20605.pdf>

<http://eduln.org/21038.pdf>

<http://eduln.org/11433.pdf>

<http://eduln.org/15327.pdf>

<http://eduln.org/11902.pdf>

<http://eduln.org/18316.pdf>

<http://eduln.org/8527.pdf>